

HealthCARE MONTANA

Creating Access to Rural Education

HealthCARE MONTANA

To transform localized college healthcare education into a statewide workforce system

\$14,998,597

- 18 Consortium Partners
- 39 Employer Partners signed LOC
 - Employer numbers continue to increase

www.HealthCAREMontana.org

October 1, 2014—
September 30, 2018

**A Homegrown Solution
for Montana's
Healthcare Workforce**

Objectives

1

Create and deliver statewide healthcare pathways characterized by stacked and latticed credentials with common healthcare core curricula for patient care and administrative tracks that feature modularized and contextualized curriculum, and online and technology-based strategies.

2

Systemically address Montana's nursing shortages and provide accelerated pathways to completion of nursing programs and bridges to BSN for adult learners.

3

Increase success for students by providing services that better prepare adult learners for success in the curriculum; accelerate credential completion; coach students in pathway navigation; and provide access to distance education.

4

Engage the healthcare industry, education, workforce programs and other stakeholders in statewide healthcare workforce transformation and strategic planning; curriculum development; on-the-job training and apprenticeship opportunities; rapid response cycle regional planning; and data driven approaches for demand-driven workforce development and education strategies.



HealthCARE MONTANA Consortium College Partners

- Bitterroot College UM, Hamilton
- Blackfeet Community College, Browning
- City College at MSU-Billings, Billings
- Chief Dull Knife College, Lame Deer
- Flathead Valley Community College, Kalispell
- Gallatin College-MSU, Bozeman
- Great Falls College-MSU, Great Falls
- Helena College-UM, Helena
- Miles Community College, Miles City
- Missoula College UM, Missoula
- Highlands College of Montana Tech, Butte
- University of Montana-Western, Dillon
- Montana State University-Northern, Havre
- Salish Kootenai College, Pablo
- Stone Child College, Box Elder, MT



HealthCARE MONTANA Employer Partners signed LOC

Benefis Health System— Great Falls	Community Medical Center—Missoula	Montana Board of Medical Examiners	Northern Montana Hospital—Havre	Rosebud Health Center— Forsyth
Bighorn Valley Health Center, Inc.—Hardin	Daniels Memorial Health Center—Scobey	Montana Board of Nursing—Statewide	Pioneer Medical Center— Big Timber	St. John’s Lutheran Ministries—Billings
Billings Area Indian Health Services	Frances Mahon Deaconess Hospital—Glasgow	Montana Health Care Providers—Statewide	Pondera Medical Center— Conrad	St. Peter’s Hospital— Helena
Billings Clinic	Goodman Group—Rocky Mountain Region	Montana Health Network—Eastern MT	Prairie Community Hospital—Terry	Sweet Medical Center— Chinook
Bozeman Deaconess Health Center	Holy Rosary Healthcare— Miles City	Montana Primary Care Association—Statewide	Providence Health & Services—Western MT	Tamarack Management, Inc.—Western MT
Bullhook Community Health Center—Havre	Kalispell Regional Healthcare	Montana State Hospital— Warm Springs	Providence St. Joseph Medical Center—Polson	Valley View Home— Glasgow
Cabinet Peaks Medical Center-Libby	Livingston Health Center	Nightingale Nursing & Caregiving—Multi City	Riverstone Health— Billings	Wheatland Memorial Healthcare—Harlowton
Clark Fork Valley Hospital—Plains	Monida Healthcare Network—Western MT	North Valley Hospital— White Fish	Roosevelt Medical Center—Culbertson	

HealthCARE Montana Employer Partners

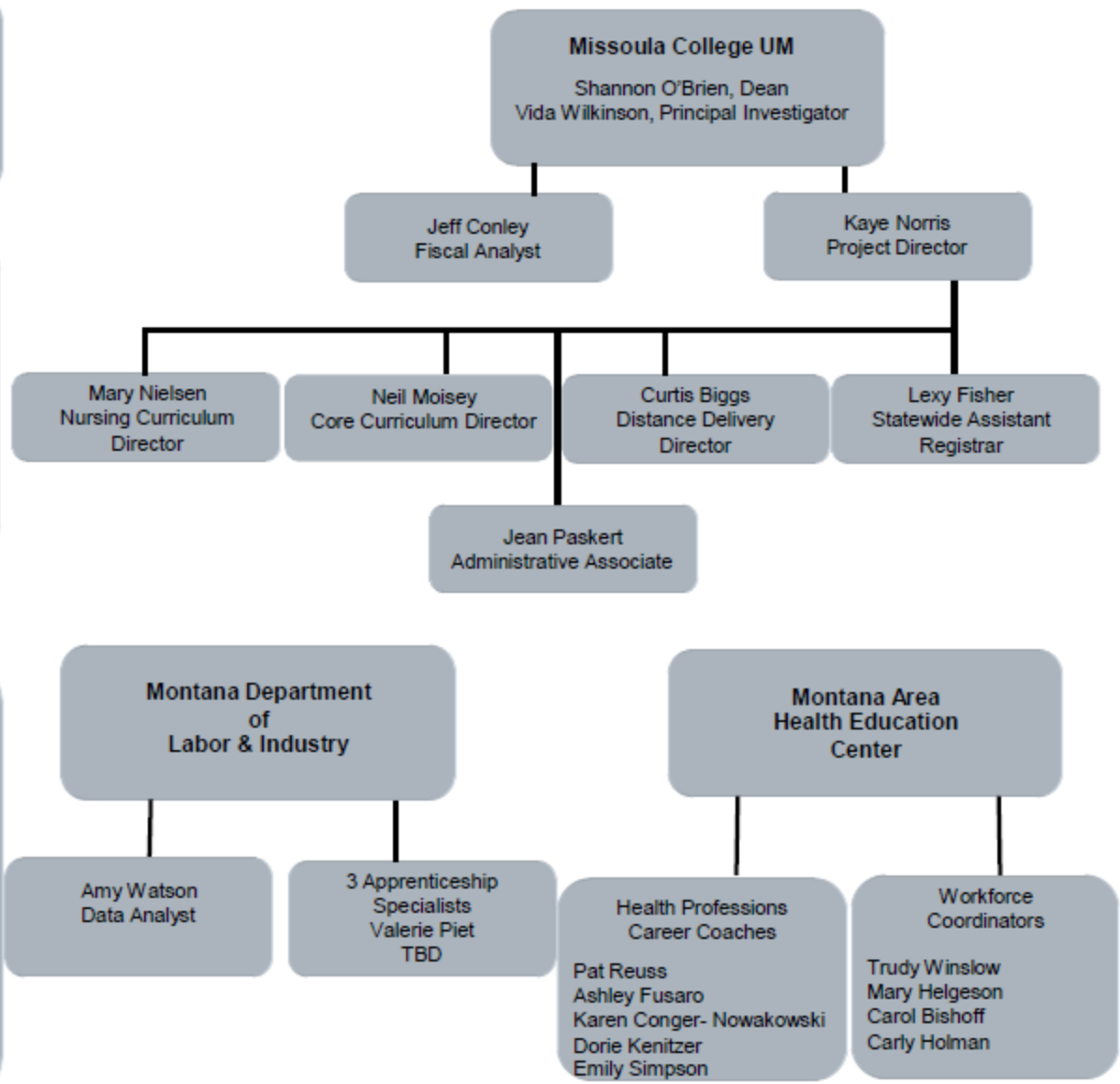


HealthCARE MONTANA Organization

HealthCARE Leadership Team
 John Cech, Deputy Commissioner, Higher Ed.
 Shannon O'Brien, Dean, Missoula College
 Vida Wilkinson, Principal Investigator
 Annie Glover, MT Dept. of Labor & Industry
 Kris Juliar, Montana AHEC

HealthCARE Steering Committee
 (includes Leadership Team)
 Cynthia Gustafson, Board of Nursing
 Sandy Sacry, Helena College
 Karen Vandaveer, MT Tech
 Katie Willock, Salish Kootenai College
 Kelly Evans, Beartooth Billings Clinic
 Matt Springer, RevUP
 Myrna Ridenour, FVCC
 Paul Teagel, The Goodman Group
 Lisa Skriner, City College MSU-B

**HealthCARE Consortium Partners
 Healthcare Transformation Specialists**
 Bitterroot College UM, Jenny Moore
 Blackfeet Community College, TBD
 City College - MSU Billings, Sheila McGinnis
 Chief Dull Knife College - John Tuthill
 Flathead Valley CC - Gail Whitney
 Gallatin Community College, Carol Schloss
 Great Falls College - MSU, Eleazar Ortega
 Helena College UM - Mark Buckner
 Miles Community College - Rita Kratky
 Missoula College UM, Dylan Rogness
 MT Tech Highlands College - Annette Kankelborg
 UM - Western, TBD
 MSU Northern - Jaymie Freidank
 Salish Kootenai College - Brittnee Broom
 Stone Child College - Elinor Wright



Kaye Norris, Project Director, Missoula

Carol Bischoff, Statewide Coordinator, Helena

Western AHEC Region

South Central AHEC Region

North Central AHEC Region

Eastern AHEC Region

North Eastern AHEC Region

Carly Holman, WFC, Missoula

WFC, Helena

WFC, Helena

Mary Helgeson, WFC, Billings

Trudy Winslow, WFC, Miles City

Emily Simpson, HCC, Missoula	Jennifer Moore, HTS, Bitterroot College, Hamilton
	Gail Whitney, HTS, Flathead Valley Community College, Kalispell
	Dylan Rogness, HTS, Missoula College
	Brittnee Broom, HTS, Salish Kootenai College, Pablo

Ashley Fusaro, HCC, Helena	Carol Schloss, HTS, Gallatin College, Bozeman
	Mark Buckner, HTS, Helena College
	Annette Kankelborg, HTS, Montana Tech, Highlands College, Butte
	UM Western, Dillon, No HTS

Karen Conger-Nowakowski, HCC, Helena/Great Falls	Blackfeet Community College, No HTS, Browning
	Eleazar Ortega, HTS, Great Falls College
	Jaymie Friedank, HTS, MSU Northern, Havre
	Elinor Wright, HTS, Stone Child College, Box Elder

Pat Reuss, HCC, Billings	Dr. Sheila McGinnis, HTS, Billings City College,
	John Tuthill, HTS, Chief Dull Knife College, Lame Deer

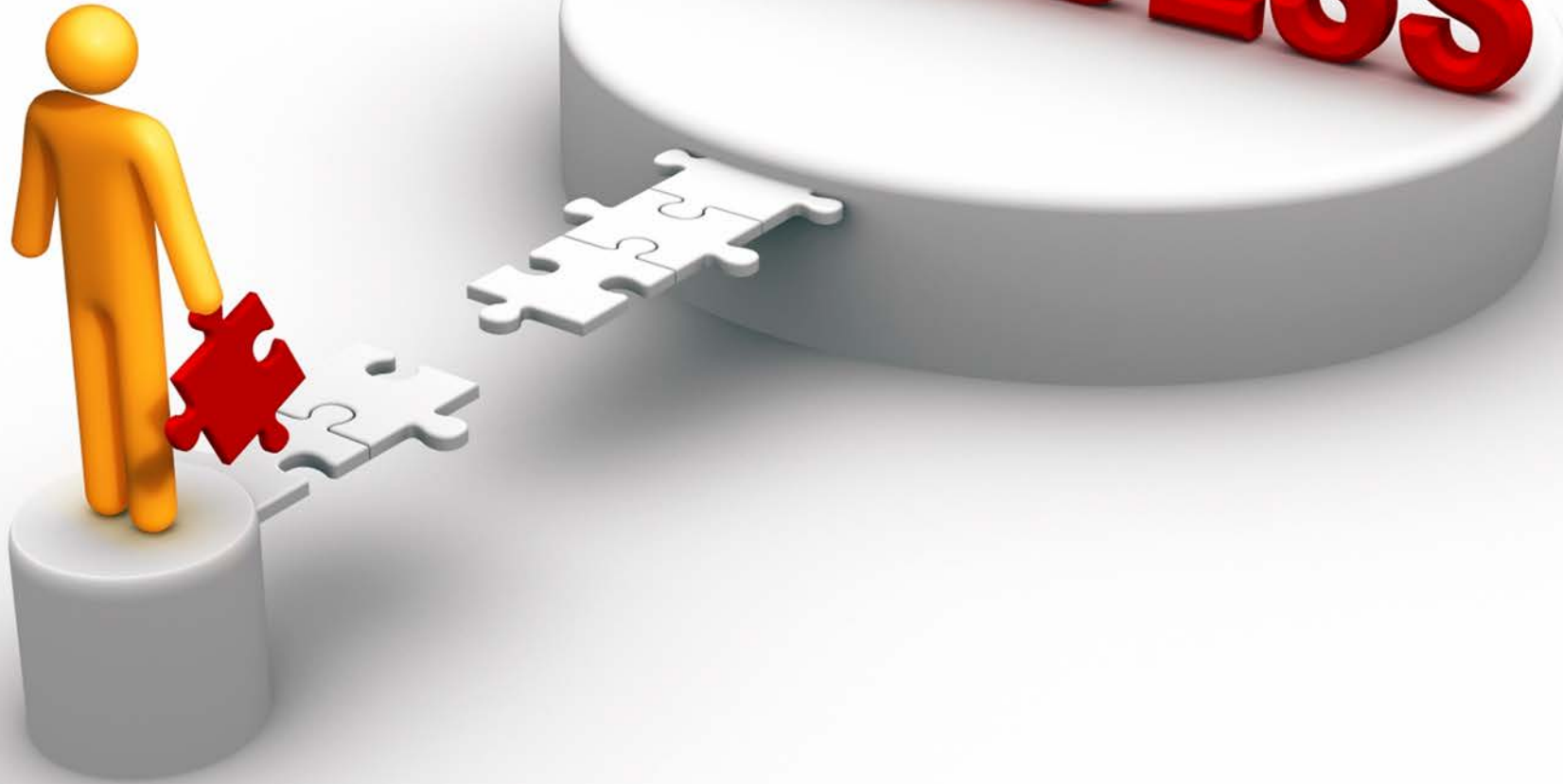
Dorie Kentzer, HCC, Miles City	Rita Kratky, HTS, Miles Community College
--------------------------------	---



AHEC = Area Health Education Center
 HCC = Healthcare Career Coach
 HTS = Healthcare Transformation Specialist
 WFC = Workforce Coordinator

HealthCARE MONTANA

SUCCESS



- Credit hours completed
- Retention
- Remedial & program completion
- Credential/degree attainment
- Progression to advanced training
- Employment
- Retention in employment after program completion
- Wages

Breaking New Ground for Healthcare Education in Montana

